



NO MEETING IN DECEMBER – SEE YOU NEXT YEAR!

PORTER'S ORCHIDS – HOLIDAY OPEN HOUSE

Porter's Orchids invites you to our annual Holiday Open House

When? Saturday, December 4, 2004
Time? 10:00 am - 4:00 pm
Where? Porter's Orchids Greenhouse,
10868 Royston Road, Grand Ledge MI 48837

Printable map available on our website: <http://portersorchids.com> Or Contact us at: orchidsuzi@aol.com, (517) 626-7295

A few special prices and holiday delights!

Don't miss this opportunity to boost your collection of quality orchids, and think about orchids as gifts for your family and friends.

Notes from the November Meeting

The November meeting was our annual potluck, held in the classrooms of the Franklin Park Conservatory. We had a slightly smaller turnout than normal. Everyone in attendance received a door prize of a very nice Phalaenopsis hybrid (some of these promise to be quite good considering their parentage). In addition, there were a lot of great plants for sale. Between the good food and great company, it was a terrific evening.

Notes from the Fall Mini-Show

The Fall Mini-Show and sale was held in early November at the Franklin Park Conservatory. While attendance was down a bit from last year, the exhibits were better than usual. We had hundreds of very nice plants for sale. Special thanks go out to everyone that volunteered their time over the weekend to help make this a successful event. If you are a new grower looking for a good source of plants, our fall and spring mini-shows, as well as our annual show in June, are perfect opportunities to add to your collection.

CORRECTION : In the last newsletter, we neglected to mention that Bill and Ruth Cavanaugh were given a blue ribbon as first prize for their Oncidium Sharry Baby 'Sweet Fragrance' at the October meeting. This was the first blooming plant that they brought to the show table, so an extra apology goes out for this oversight. Congratulations for a well-bloomed plant!

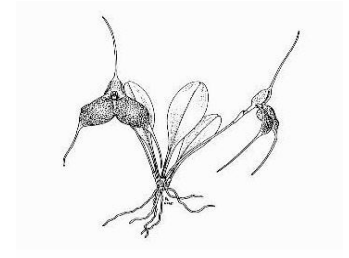
Orchid Digest - Interested in learning more about orchids? Consider subscribing to the Orchid Digest.

This is a publication similar to Orchids, published by the American Orchid Society, which frequently includes issues devoted to a specific genus. The Orchid Digest is published quarterly. The most recent issue was devoted to the genus Cattleia and included a number of very informative articles along with a huge number of terrific photographs. Membership dues are \$32 per year. To join, send dues to: Orchid Digest Membership, PO Box 10360, Canoga Park, CA 91309-1360

Welcome to Our Newest Member:

John Bostwick

Please take a minute during upcoming meetings to welcome John to our group.



COOS OFFICERS

President	Tom Lochner.....	614-487-8197
Vice President	Tom Franczak.....	614-868-5636
Treasurer	Chuck Hill.....	614-442-6995
Secretary	Jennelle Szczepanski.....	614-868-7309

COOS TRUSTEES

Tom Bell-Games.....	614-487-1623
Sue Dervin.....	614-866-4059
Jim Harper.....	614-965-1921
Matina Ross.....	614-263-4819
Don Weber.....	614-846-7712
Cathy Willis.....	614-847-0676

IMPORTANT ANNOUNCEMENT !

Our president, Tom Lochner, has offered to serve as chairperson for our annual AOS show. This will be held in early June, 2005. We still need volunteers to help out by serving as chairs for a number of committees that will help coordinate this event. Tasks include contacting vendors and judges, organizing awards, coordinating hospitality for the judges and vendors, etc. The more people we have volunteer, the less work each person will have to do – your help, a little or a lot, will help make this a successful event. Contact Tom Lochner to let him know of your interest in helping out.

GROWING TIPS –

Looking for an easy to grow *Masdevallia*? Try *Masdevallia peristeria*. This is a very warmth tolerant species and a great introduction into this genus. *M. peristeria* is somewhat variable, depending on the region of origin. According to Luer



(Icones Pleurothallidinarum XXI, Systematics of *Masdevallia*, Part Two), this species grows commonly as a terrestrial on high grassy slopes. In Ecuador, it grows along with *M. angulata*. It is common to Columbia and Ecuador. It is characterized by thick, leathery leaves with a fleshy, solitary flower. The sepals are variously dotted with purple. The leaves are thick and leathery. As an added bonus, it is slightly fragrant.

While most species of this genus are somewhat delicate, this is a vigorous grower that does well with intermediate temperatures and moderate light. As can be seen with the plant in this photograph, these often put out a large flush of flowers. These typically bloom once a year in the fall, though a second blooming is not uncommon in spring. As with all orchids, water of good quality is always appreciated.

ARE YOU A MEMBER OF THE AMERICAN ORCHID SOCIETY YET? If not, consider joining today. Benefits include the monthly journal of the AOS, "Orchids". This is a great source of information on orchids including culture, hybridizing trends, conservation, and sources of plants. For information regarding joining, call 561.404.2000 or e-mail TheAOS@aos.org. One year membership is \$46.50.

HOSPITALITY – We could still use a few volunteers for hospitality at some meetings next spring (April, May, and June). If you are able to help provide hospitality at one of the upcoming meetings, please let Naila Caruso know. Naila is the chair person for Hospitality and can be reached at 868-5861. We will post a reminder in the newsletter each month as to who has volunteered for the upcoming meeting.

The Orchid Guide Digest.

Looking for more information about orchids? Try the Orchid Guide Digest, an e-mail list service that is devoted to orchids. At the end of October 1998 the 'Orchid List Digest' (OLD) run by Willis Dair stopped distributing mails to the orchid community. After a couple of months the idea grew to create a successor to the OLD. Hence, the 'Orchid Guide Digest' (OGD) was born and launched on April 15th, 1999. Many people used this list as a fast and easy way of communication to ask help with the care of their orchids, to talk about discoveries made during their travels or just, as a means of exchanging ideas. Topics in the digest included, but were and are not limited to:

- Cultivation methods.
- Orchid species and hybrids.
- Orchid travels.
- Orchid Society events.
- Conservation and propagation techniques.
- Any other orchid related subjects of interest.

This list is sent out in digest format only, meaning that submissions will automatically be collected and sent out in a bundled format. Digests normally have a size of around 20 Kb. There are currently about 1,700 people that subscribe to this list. They represent all types of growers, from internationally recognized taxonomists to folks who just bought their first orchid at the local "big box" store.

To minimize the effect of spamming this list is a closed distribution list, meaning that you have to be subscribed in order to send a message for distribution. Please note however, that the list owner cannot be held responsible in any way for the content of any contributions on the 'Orchid Guide Digest'. The list is administered by Kenneth Bruyninckx of The Netherlands.

Subscribe to the digest.

So, how do you subscribe to the Orchid Guide Digest ?

Send an e-mail addressed to orchids-request@orchidguide.com with the following command in the body of the message:

SUBSCRIBE digest address=your e-mail address****

substituting the text 'your e-mail address' with your real e-mail address.

Potluck Switcheroo. Proof you can be a vegetarian and not miss your meat (loaf)!

Those of you who ate the unglazed meatloaf from the foiled platter at our Nov. potluck may be surprised to find it contained no meat. As several requests have been received for the recipe, here it is, Meat(less) Loaf:

Preheat oven to 350', grease loaf pan.

Mix thoroughly by hand the following ingredients:

1 lb. beef flavor Gimme Lean®
1 med.onion, diced
1/4 c.minced fresh parsley
2 eggs
1.25 tsp salt

1 tsp black pepper
1 tsp garlic powder
1/2 c.oil (I use canola) - less can be used if desired, but loaf will be drier.
1/3 c.catsup

Once thoroughly mixed, add 1 c.uncooked oats Then again, mix thoroughly by hand.

Place in greased loaf pan, pat flat.

Bake 1 hour @ 350'. Remove from pan hot after running knife around edges.

Enjoy!

Recipe compliments of Tennis Maynard.

Tom Franczak has requested the recipe for the broccoli casserole brought to the November potluck. If you brought the broccoli casserole to the potluck, please send a copy of the recipe to tbellgames@burnip.com so we can include it in the next newsletter!

RESULTS FROM THE COOS SURVEY

A survey of the members of the Central Ohio Orchid Society was sent out with the newsletter a few months ago. While the response rate was not quite what we had hoped, those that did respond had the following opinions regarding where we need improvement. We received 17 responses. (Some responded to more than one category for a given question.) Responses are summarized below.

1. How long have you been growing orchids?

Less than one year	0
1-2 years	4
2-5 years	7
> 5 years	6

2. Where do you grow?

Windowsill	10
Greenhouse	2
Underlights	6
Two respondents indicated they also grow in a sun porch.	

3. How many orchids do you have in your collection?

<20	4
20 to 100	8
100 to 200	3
>200	2

(Obviously, people don't have enough plants in their collections!)

4. What do you like best about the society?

Beginners' corner and I enjoyed clerking at the summer show.

Members are friendly.

Members offer good advice on growing orchids.

It's wonderful that members bring their blooming plants each month to let other members see the blooms.

Willingness of members to help with show set up and teardowns.

Also, COOS being involved in shows with other Orchid Societies.

People are very nice, approachable; they don't mind answering questions and sharing information.

People are quick to point you to good literature about your inquiry.

I feel at home here.

Also, I like the plant sales and shows.

The friendliness of the "experts" and their willingness to share knowledge of species, techniques, time, patience with underlings, and commitment to community and other societies in Ohio and areas nearby.

The speakers with experiences and knowledge some of us can only dream of!

Sharing information, shows with availability of new plants to collect.

Out of town speakers and annual AOS show and sale.

Free information, chance to grow my collection cheaper than a retail store in most cases.

The newsletter; sources to buy new orchids; source of dates and locations of shows.

Comradship and seeing orchids.

Orchid shows, newsletter, information, and classes.

Fellowship and a learning experience

New member classes.

It's close to home, love the Beginners' Table, membership is affordable.

Programs and helpful information in new growers meeting.

Beginners' Corner

Friendly members.

Variety and meeting place.

5. Do you come to the monthly meetings – and if not, why not?

Most respondents indicated that they do indeed come to meetings. Busy schedules and difficulty driving at night were reasons indicated for not coming to meetings. One respondent indicated coming to most meetings except the November potluck.

6. What needs improvement in the society?

Setting up the orchid displays at the shows is sometimes a bit uncomfortable. Very competitive.

Somehow re-invent the name tags for members at meetings.

I would like more hands on meetings. In a March 2004 edition of Orchids, there was an article named "The 15-minute Solution". It describes what the Denver, Colorado society does in lieu of speakers.

My favorite is on Pests and Diseases. They set-up a station and members bring in leaves (in baggies).

The use a hand lens or small dissecting microscope to I.D. bugs. Also, could we dissect some flowers? We'd like to learn more about genetics too I know we had one meeting devoted to this already, but I'm ready for another.

Do a meeting on judging criteria.

Perhaps start Beginners' Corner earlier so more attention could be given to the Judging Table.

It would be nice for newcomers to know who's who. The "oldtimers" know each other but seem unwilling to open "the circle" outside of imparting info and knowledge to new and prospective members.

People who bring orchids to show table to explain their growing conditions and methods. I think it would help all members relate to their own conditions.

More attention toward new members by older members.

People need to introduce themselves when speaking.

The chairs are very uncomfortable to sit in for long periods of time.

Meetings go a bit too long - serve food and drink before meeting so we could leave earlier. Maybe cut back on the amount of food.

The slide shows, while interesting, tend to make me sleepy.

More hands on advice.

Eliminate the snacks at the end of the meeting.

7. Improvements in the newsletter?

The majority of respondents indicated no improvements needed. Among suggestions received were:

- More tips or maybe use a question and have everyone find an answer.
- Get people to write articles.
- More articles on orchids, local resources, stores, etc.
- Maybe focus on one member (bio) so us 'newbies' get to know the members; list local sources of supply.

8. What types of programs do you like best for our monthly meetings? (level of interest 1 to 5, 1 highest)

Hands-on Demos	1.85
Orchid Culture	1.92
Out-of-Town Speakers	2.00
AOS Slide Presentations	2.91

9. Other Comments:

Building kit greenhouses suitable for Ohio winters.

Autowatering systems (that work)

Lighting systems

Would any members be willing to open up their orchid growing space for members to visit? A one-day event; members going from one growing space to another?

Demonstrations of crossings, pod times, pests-pests-pests, judging criteria.

The Ultimate - if we could sell enough flowers, save the money and then go on an "Orchid Safari" to some place like Maui or New Guinea

and hunt for orchids in the wild! I'd settle for a trip to a fancy show though.

When we learn about a new species, I'd like to know what really sets them apart and makes them a different species.

We have had an excellent diversification of programs this year but newcomers would probably appreciate some hands on demos each month.

Perhaps meet 6:30 - 7:30?

The newsletter has been terrific with needed info, articles of interest, dates and schedules, and timely hints of care and techniques.

Speakers with more info on "Home Growing" orchids.

Would like us to host a one-day special speakers/plant sales event similar to what Cincinnati does.

Would like to see potting media sold at meetings and would like our library books brought out for lending at meetings.

I am interested in continuing my membership even though I am unable to attend the meetings.

Programs this year have been good for experienced growers. Are new members saying the same?

Members are friendly and helpful; easy to talk with.

What are judges looking for in an orchid?

Lighting for the technically challenged.

Loved Ken Mettler's slide show on terrestrials.

Beginners' Corner is great idea - encourage so new members know more about it.

COMMENTS ON THE SURVEY: Our society, like most, consists of a blend of newer growers and folks that have been growing for a long time. Reading through the responses and various comments in the returned surveys, this becomes even more evident. One of the Society's goals is to meet the needs and interests of our membership. With such a broad range of experience, this can be a bit difficult at times. Hopefully, through our various speakers and events, we are keeping everyone interested and engaged in this fascinating hobby. From an experienced grower's perspective, the "hands-on" demonstrations can, at times, seem a bit simplistic. We experienced growers need to view these workshops as opportunities to help share our knowledge. From a newer grower's perspective, the out of town speakers can, at times, be talking over our head. We newer grower's need to consider this a learning experience and attempt to expand our knowledge of plants and their culture. Some of us who have been in the society for a long time know a good number of the long-term members. Others, who are newer members, know few, if any, of the other members. We all need to try to introduce ourselves to those we don't know. Let's all take a minute during upcoming meetings to introduce ourselves and get to know one another a bit better!

NEWSLETTER ARTICLES: Please contact Tom Bell-Games at: tbellgames@burnip.com if you want to contribute an article to the newsletter or have an announcement to be included in the newsletter.

THE CENTRAL OHIO ORCHID SOCIETY
c/o TOM BELL-GAMES
1615 ANDOVER ROAD
COLUMBUS, OH 43212



CENTRAL OHIO ORCHID SOCIETY
NEWSLETTER