



***February Meeting – Russ Vernon – A Visit to the 2007 Taiwan Orchid Show***  
***Thursday, February 17, 2011***  
***8:00 p.m., Franklin Park Conservatory Classrooms***  
***7:30 to 8:00 p.m. Beginner's Corner***

## ***Too Many Orchids...Is there such a thing***

The February speaker will be Russ Vernon. Many of you know Russ. He is a former member of our Society, a fairly regular speaker at our meetings and a frequent vendor at our shows.

His plants, he grows some absolute beauties, are always very impressive and he does some dynamic displays. The subject will be "A Visit to the 2007 Taiwan Orchid Show." Russ has traveled to Taiwan, as demonstrated by the show topic, England, and Central and South America, in pursuit of orchids and orchid knowledge. His greenhouses grow a variety of Phalaenopsis, Odontoglossums, Lycastes and other genera.

Russ is an orchid judge as well as a hybridizer and micropropagator of the plants he sells.

He will be bringing plants for sale so bring your wallets and your appetite for new plants.



C Granier's Charm 'Blue King' AM/AOS

And, as usual, we will be having our pre-meeting meet-and-greet dinner at Aladdin's on East Main Street just east of FPC at 6PM; all are welcome.

## **Bill Cavanaugh**

Our membership year is January to December. If you joined the society and you paid your dues in November or December of 2010, you are covered for 2011 as well. For all of the rest of us, it is, time to begin the renewal process. You can pay your dues at the January meeting, or you can send a check to our membership chair. (made payable to "Central Ohio Orchid Society") **John Geslak (8498 West Ohio State Lane, Lancaster, OH 43130)**. Please support the society by renewing as soon as possible. Your contribution enhances the society and what it is able to do for you. The dues are \$15.00 for Individuals and \$20.00 per household.

## Membership

Since we missed the January Meeting, we will repeat John's appeal for early renewal.

A new year has started and again, it's time for COOS annual dues renewal. We're hoping all old members return and to greet more new members this year. Dues are \$15 for a single and \$20 for a family membership. Dues help pay for speakers throughout the year, provide money for trophies, ribbons etc. for our shows and a nice plant for each person attending the annual dinner held in November. Becoming a member and attending meetings provides ample opportunities to learn more about orchids, mingle with friends with the same addiction and yes to even acquire additional plants. You also get to enjoy seeing plants others grow and exhibit at our monthly meetings. You can each do as much or as little as you want as a member however we would love to see each member participate as much as they can....the more everyone is involved, the less everyone involved has to do.

Please make checks out to COOS. You may pay me at the upcoming meeting or mail a check to me at the following address:

John Geslak  
8498 West Ohio State Lane  
Lancaster, Oh 43130

You may contact me at the following number if you have any questions; 614-837-3556

Thanks for remaining a member ....**John Geslak , membership chair.**

Dates for Orchid Judging at the Cincinnati Center: Civic Garden Center of Greater Cincinnati, 2715 Reading Road, Cincinnati. Registration of Plants at 12:00, Judging starts at 1:00. February 13, March 13, and April 10, 2011...

## Welcome New Members

Alas there is nothing new to report with regard to membership just as there is nothing much new to report regarding many things since the weather ditched our January meeting. However, we encourage all of our new members to attend the February meeting and meet and greet the rest of us and we encourage all of our members to bring a new member to the meeting. If everyone brings one new member...we will have to open the third room for the meeting. Not necessarily a bad thing. Get out there and go for it.

### **2010/2011 COOS Officers - Terms of Office are from January 1, 2010 to December 31, 2011**

President:	Nancy Wagener		614-276-8890
1 <sup>st</sup> Vice President:	Ed Davis	Program Chair	937-393-3200
2 <sup>nd</sup> Vice President:	David Markley	Home Show Chair	614-471-5437
3 <sup>rd</sup> Vice President:	Dallas Ingram	Away Show Chair	614-344-5091
Secretary:	Rosina Bell-Games	Recorder	614-487-1623
Assistant Secretary:	Bill Cavanaugh	Newsletter Editor	614-878-1745
Treasurer	Screll Jones	Collect/Disburse Monies	614-864-7924
Assistant Treasurer:	John Geslak	Membership Chair	614-837-3556

### **COOS Trustees – Terms of Office Expire December 31<sup>st</sup> of the Year Shown.**

Lori Baldwin	2011	740-246-4713
Eilleen Ansley	2011	614-457-7774
Jim Harper	2013	614-965-1921
Don Weber	2013	614-846-7712
Tennis Maynard	Immediate Past President	614-252-5710



Blc Volcano Prince



Cynodes Wine Delight 'Jem' FCC/AOS

### Notes from the January Meeting.

Rats!!! No January meeting to report as the weather blitzed us and kept us home. Thus, no plants, no show table, no growers points, no fun...well, you get the idea. We will try again this month.

As always, we encourage you to bring your blooming plants to the show table and share your skills and the beauty of your plants with your fellow members. We will continue to need a little assistance from the membership to facilitate the show table results and the contest tally. Would you please **print** your name and the name of the plant clearly? It is really hard if someone has to guess at the name of the plant or of the exhibitor. It makes life a little easier if you include all of the info in an easily readable form. Thanks.



Laelia anceps 'Boulder Valley' HCC/AOS



Maxillaria sophronitis

Here, reprinted with permission, is another contribution to our general knowledge of orchid growing provided by Ray Barkalow at First Rays Orchids. Ray can be found on the web at [www.firstrays.com](http://www.firstrays.com).

## Growing Plants Outside the Conditions You Can Normally Provide

If you have read some of the articles posted here, you know I am a big proponent of analyzing your growing conditions and acquiring plants that are well-suited to the environment you can easily and routinely provide. Sometimes, however, one just has to have a plant (or plants, more likely) that are a stretch.

Sure, you can crank up the heat in your home, or air condition your greenhouse, but what if you don't want to make that kind of investment? No worries! There are easy ways around those issues.

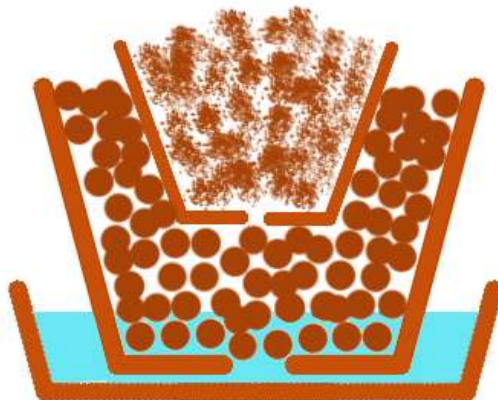
**Plants that like it warmer:** This is an easy one - use a seedling heat mat under the pots.



The 9" x 19" size pictured fits perfectly inside of a standard nursery tray and boosts the root zone temperature by about 15°F above ambient, and drawing only 17 watts of electricity, it won't "break the bank" doing so. Other sizes are available for those wanting to "convert" larger areas.

**Plants that like it cooler:** This requirement presents a bit more of a challenge, but can still be achieved quite simply.

If you grow your plants in semi-hydroponics™, switching from a plastic- to a clay pot (standing in a tray of water to act as the reservoir) will increase the evaporation rate through the side wall of the pot, enhancing the evaporative cooling. If you do not grow in S/H culture, you can still take advantage of the evaporative cooling by nestling your pot inside of a clay pot of LECA, as pictured below.



This technique - utilizing EcoWeb™ as the potting medium - has gained a great deal of popularity with growers of small, fine-rooted Andean species and their hybrids.

# 2011 COOS Calendar

February 17	Meeting – Russ Vernon – A Visit to the 2007 Taiwan Orchid Show
March 17	Meeting – Eric Sauer – Selected South American Orchids
<b>March 26/27</b>	<b>Central Ohio Orchid Society Annual Spring Show</b>
April 21	Meeting – Larry Sanford – Growing under LED Lights
May 19	Meeting – Speaker to be determined
June 16	Meeting – Speaker to be determined
July 17*	Picnic – Not set for Franklin Park Conservatory grounds - <b>Tentative</b>
September 15	Meeting – Speaker to be determined
October 20	Meeting – Speaker to be determined
<b>November 5-6</b>	<b>Mini-show</b>
November 17	Awards Banquet and Potluck Dinner

**Board Meetings.** Board meetings will be held the second Tuesday of odd numbered months. They begin at 7:00 PM

January 11	July 12
March 8	September 13
May 10	November 8

\* Tentative picnic date

## Annual Contest – Rules and Scoring – Revisited

Our fifth and annual growing contest has commenced. Here is a review of the scoring and the rules for the new members and for those as addle paited as me who have to read them to remember them. It is a new year, attack it with gusto.

Point scoring - No Change

<i>Award</i>	<i>At monthly meetings</i>	<i>At an away show</i>
1 <sup>st</sup>	10	20
2 <sup>nd</sup>	5	10
3 <sup>rd</sup>	3	5
No ribbon	1	2
Plant of the Month	20	
Best of Class		20
Other Special		20

### *Rules*

1. Plants must be free of obvious disease or pests. Plants seen to be harboring mealies, scale, etc., will be disqualified and isolated.
2. The flowers should be the result of your growing skills, not those of a vendor or previous owner. **Accordingly, we ask that you only claim points for plants you have been growing for at least 6 months.** You may exhibit any plant you own and are encouraged to do so. However, if you have not owned the plant for 6 months previously, note that it is not to be included in the contest tally on the entry sheet.
3. If you submit plants for a COOS exhibit at an away orchid show, the away show chair will report entries and ribbons to the contest coordinator. If you submit plants in your own or any other exhibit at an away orchid show, you must report the entries and ribbons to the contest coordinator.

4. The contest year Begins with the Annual Awards/Holiday banquet and ends October 31.
5. You are a “beginner” for contest purposes until either your name has appeared in the membership directory for current year – 2 or prior, or, you have finished in the top 3 of an annual contest. Basically, we want to assure that you have 2 full years of eligibility as a “beginner.” For example, in 2007, you are a “beginner” if your name is not in the membership directory for 2005 or prior, even if it appears in the 2006 directory.
6. To qualify for any award in the annual contest, a minimum of 20 points is required.
7. There will be two divisions in the growing contest. Division one will be greenhouse growers and division two will be all others, that is window sill or under lights or any combination. On your entry form for each plant, please list the division that you compete in, i.e., Greenhouse or other. Prizes will be awarded to the first two places in each division and to the best new grower. .

These will be the rules for the 2010/11 contest. So our mantra is - Grow your plants to perfection --- and grow LOTS of them. Do that and you will be at the top of the list, an admirable place to reside.

## Annual Growers Contest

The 2010/2011 iteration of our annual growing contest is on. Nobody has an edge...yet. We lost the January meeting so there is still little change. We won't know the winner until much later this year and it should be another really great contest. The totals include the November show table and the Grand Rapids show, nothing else to include yet, and hopefully they will be updated monthly all year this year. We can hope. So marshal your growing skills and show your plants. Share the beauty with all of us. Bring your plants to the show table. The new contest year rolls on. If you have any disagreements with the totals let me know as soon as possible so that it can be set straight. Keep showing those orchids.

### Green House Division

Tennis Maynard	159
Screll Jones	65
Tom and Pat Stinson	39
Dallas Ingram	16

### AYO (All You Others)

Scott Bever	36	Ken Mettler	3
Bill Cavanaugh	22	Lew Beman	3
Dave and Edna Markley	7		

Keep growing and showing. Our new champions will be crowned at the November meeting.

## Away Show Bulletin!

Upcoming Nearby Shows:

It is away show season again and below is a listing of the local, local is relative to your need to see beautiful orchids and your ability to travel, orchid shows. We will be attending a number of them beginning with the Grand Rapids show. Dallas Ingram, our away show chair, will be taking 15 to 20 plants to the Grand Rapids show so if you bring plants to the January meeting, please have them prepared to travel. Dallas will return them to you on Monday. An address and name, mail address labels work well, on the pot will help him greatly. Remember, this is the real beginning of the annual growers contest.

February, 2011

**19-20 - Miami Valley Orchid Society Show**, Contact: Dave Brown, [dbrown261@woh.rr.com](mailto:dbrown261@woh.rr.com).

**Just an hour away, support your almost local orchid society. They are always supportive of us.**

**26-27 - Greater Lansing Orchid Society Show**, Michigan State Univ. Plant & Soil Science Conservatory, SW Corner of Bogue St. & Wilson Rd., East Lansing, MI. Contact: Jim Leaman, 7315 Jeffrey Ct., Linden, MI 48451; (810) 735-5495; [lindenjim@chartermi.net](mailto:lindenjim@chartermi.net).

**Another weekend road trip. Good for the soul and a harbinger of Spring...we hope.**

March, 2011

**4-6 - Smoky Mountain Orchid Society Show**, West Town Mall, 7600 Kington Pike, Knoxville, TN. Contact: Bonnie Armstrong, 850 Promiseland Rd., Blaine, TN 37709; (865) 567-2983; [willywar2@frontiernet.net](mailto:willywar2@frontiernet.net).

**12-13 - West Shore Orchid Society Show**, Contact: Chester Kieliszek, 224 N. Oakmont Dr., Northfield Ctr., OH 44067; (216) 210-2407; [kieliszakc@ferro.com](mailto:kieliszakc@ferro.com).

**19-20 - Orchid Society of Western Pennsylvania Show**, Phipps Garden Center, 1059 Shady Ave., Pittsburgh, PA. Contact: Charles VanDyke; [cvandyke@andrew.cmu.edu](mailto:cvandyke@andrew.cmu.edu).

**19-20 - Greater Cincinnati Orchid Society Show**, Contact: rick Noel, 8767 Apalachee Dr., Cincinnati, OH 45249; [rnoel1@cinci.rr.com](mailto:rnoel1@cinci.rr.com).

**26-27 - Central Ohio Orchid Society Show**, Franklin Park Conservatory, 1777 East Broad St., Columbus, OH. Contact: Dave Markley, 906 N. Stygler Rd., Gahanna, OH 43230; (614) 471-5437; [dmarkley5868@wowway.com](mailto:dmarkley5868@wowway.com)



**Haraella retrocalla**



**Cymbidium William Weaver**

## It's Showtime .... Away Show that is....

All right!! Another Away Show season is upon us and while we went to Cleveland last weekend, results next month, and we have the Dayton show coming up this weekend, we kicked off with a trip to the Grand Rapids orchid show. Thanks to Dallas Ingram our Away Show chair for setting up and tearing down. Just a quick reminder, Dallas is looking for a little help this weekend setting up Dayton so we can take more plants. If you can help out, see Dallas at the meeting. We did win a first place for the display and had a number of plants ribbon so it was a good performance for the first very early show. The individual results are below.

### Dayton

1 <sup>st</sup>	Lc Persepolis 'Splendor' AM/AOS	Tennis Maynard
1 <sup>st</sup>	Cynoches chlorochilon x Cynodes Jumbo Mickey	Tennis Maynard
2 <sup>nd</sup>	Maxillaria fuscata 'Stony Point' CHM/AOS	Tennis Maynard
2 <sup>nd</sup>	Kefersteinia vollesii	Tennis Maynard
2 <sup>nd</sup>	Pot Passion x Lc Gold Digger	Dallas Ingram
2 <sup>nd</sup>	C percivaliana	Bill Cavanaugh

### Editor's Corner:

Well, our first away show has occurred and we have two more this month. I can see the grass, dormant as it is, in most of my back yard and in some of my front yard. For some reason the entire neighborhood is snow free at least a week before my front yard relents. It is time for a trip or two to the less traveled places in search of the first harbingers of spring. I felt a warm breeze today and the weatherman says more are to come. Puxatawney Phil says there will be an early spring. Boy do I hope he is right. Take a deep breath and dive into it and enjoy it because in no time the spring show will be here and the spring show season will be over. Summer will be here and the picnic will be the event to look toward. Boom! It will be the fall show season, MAOC's will have come and gone, winter will be on the horizon and another year will be history. Grab hold of something and make father time grab you kicking and screaming down that path. Hold on to the moment and enjoy another great year of within our orchid community. Hope you all have a real fun time. Hope I do too.

Bill C.

### Hospitality

Well, it is a recurring theme here, no one to thank for the January treats since there was a weather washout of the January meeting. We would thank you if there had been a meeting but since there wasn't, we thank the January volunteers for carrying over to February.

And so, we would like to offer the usual huge thank you, in advance, to all of you who have signed up to provide snacks and goodies for the upcoming meetings, volunteers are listed below. Oops, no volunteers beyond February yet. As ever, the months with a red **volunteer needed** notice, need a volunteer. I am sure you would make Dave and Edna Markley, our hospitality chairs, breathe easier if they could start getting volunteers for this year.

David and Edna Markley are our mavens of hospitality. So, for those of you who just can't wait to participate, please give the Markley's a call or sign up at the next meeting. Let them know you would like to add your name to the merriment roster.

If you have to cancel try to get a person from the following month to switch or ring David or Edna to change months.



David and Edna Markley can be reached at 614-471-5437 You can also reach them by e-mail at [dmarkley5868@wowway.com](mailto:dmarkley5868@wowway.com).

February	Naila Caruso	March	Volunteer Needed
February	Sandra Stohr	March	Volunteer Needed
February	Bill Cavanaugh	March	Volunteer Needed
April	Volunteer Needed	May	Volunteer Needed
April	Volunteer Needed	May	Volunteer Needed
April	Volunteer Needed	May	Volunteer Needed

If you have already volunteered for one of these dates, bless you and I will list your name as soon as I have it, just as a reminder.

Since there was no January Meeting – We Reprise Elizabeth Ann

Bulbophyllum Elizabeth Ann - Plant of the Month November  
Grown by Screll Jones

