



March Meeting – Taxonomy

Thursday, March 15, 2007

7:30 p.m., Franklin Park Conservatory Classrooms

7:30 – 8:00p.m., Beginners' Corner

Someone to Blame....At Last

Tired of changing labels with every whim of some distant taxonomic authority? Confused or just in the dark about what's what and what's related to what? Think it's kind of hard to know how to treat a plant when your not sure exactly what it is - /this week/?

Well, now you'll have someone to blame – or at least someone to answer those questions. At our March 15th meeting, we will be fortunate to have Dr. Clark Riley's talk, "Orchid taxonomy for Fun and Profit – A Beginner's introduction and a Veteran's Relief". Not too technical for the layman, I'm promised it will be fun and interesting. Dr. Riley brings with him his experience of working in a genetics lab, teaching at the college level, and more than 40 years of growing orchids. Learn what is important and what is trivia with taxonomy and live at peace with your labels!



Society members headed to a Taxonomic convention

Our speaker will be bringing plants to sell, so those of you who haven't had the opportunity to add to your collection recently and those of you who have, remember to bring along your cash and check books.

We'll be having our usual "meet-and-greet" dinner at Wing's Chinese restaurant n East Main St. close to the conservatory at about 6 PM. Unfortunately our usual haunt, the Old Bag of Nails, burned down recently so we will be restaurant-hopping from time to time.

See you there!

Tennis Maynard

President's Message

And now we turn our attention to our Spring Show this month. I know that **Tom Bell-Games** (Show Chair) and **Nancy Wagener** (Volunteer Coordinator) have lots to say about the show and so I'll keep my remarks about it to a minimum. I expect a lot of you will put in a few hours helping out with the show and I expect all of you will enjoy spending some time as a spectator at the show.

As visitors to the show take in the exhibits, they almost always want to ask someone something about the orchids they're seeing. But whom? As an experiment, I wandered through the exhibits for an hour a year ago. Nobody asked me anything, though I overheard several people wondering out loud about the plants. I put on my COOS name badge and repeated my tour of the exhibits. Within a minute visitors were asking me questions about the plants, the show, the society.



Lycaste macrophylla

So my request of you will not be for any heavy lifting, (Tom and Nancy will beat the drums for that); I just want to make the simple request that you wear your COOS name badge while you're at the show. I guarantee that you'll meet some folks that way and, hey, if you sense a strong interest, walk the guests over to the information table and urge them to fill out a membership app. J

If you've been dawdling about the Chicago MAOC at the end of April, I talked to **Lois Cinert** a couple days ago and she told me she's extending the reduced rate for registration until April 1.

If you attend, and I hope a ton of you do, pay close attention to how that meeting and show are being put together. It's a split venue with the lectures, business meetings and dinner being held at the host hotel and the show and sales being held at the nearby botanic garden. This is the same format we will follow when we host the MAOC event in 2009. Enjoy the flowers and knock yourself out shopping, but also look behind the curtains and absorb what you can about the work being done by their volunteer army. We need to gather, increase and pool all our experience in preparation for 2009.

And do volunteer to help out at our own shows this year and next. The MAOC is just like our Spring Shows ... only moreso. J

Tom Franczak

We are now into March and are faced with that age-old problem, how do you get your members to pay their dues? With the new year came the membership renewal season. Our membership year is January to December. If you joined the society and you paid your dues in November or December of last year, you are covered for this year as well. If you have paid your dues already, bless you. If you have not paid your dues as yet, please renew your membership in the Central Ohio Orchid Society **TODAY**. Jon Young compiles a membership directory and provides a copy to each member. It's very nicely done and you get to see your name up in lights so to speak. However, time becomes an issue and he can't wait much longer to start the project, it is after all, a 2007 membership directory. Please send your check (made payable to "Central Ohio Orchid Society" to our **membership chair, Jon Young (1752 Marsdale Avenue, Columbus, OH 43223)**, OR bring your check to the next meeting, OR pay your dues at the Spring Show on March 31, April 1. The deadline is April 1. After that we will still gladly take your dues, but you won't be in the membership directory. Also make sure that Jon has your correct information. You know, address, phone, e-mail address, all that stuff. Please support the society by renewing as soon as possible. The dues are \$15.00 for Individuals and \$20.00 per household.

Ye Olde Orchid Glossary

Galeate - helmet-shaped

Gene – Self duplicating unit of inheritance located in chromosome, recognized by a constant effect on an individual for a particular character, and remaining generally unchanged from cell division to cell division and from generation to generation.

Genera- Plural of genus.

Genus- A group of orchids that are classified together because of similar traits and an assumed common ancestry; there are some 860 naturally occurring orchid genera and an additional 550 manmade inter generic ones.

Geonomes – Complete set of chromosomes inherited from one parent as a unit. A group of characters handed down from plant to plant.

Geophyte - terrestrials that have a large water storage capability to survive arid conditions

Germination – The unfolding of the embryo and the self establishment of the plantlet.

Glutinous - covered with a sticky or wet substance

Grex- Term used to refer to the group of progeny of a specific cross.

Growths- Any new shoots that emerge, whether they be pseudo bulb, rhizome, leaf, stem, inflorescence, or root.

Guttate – Spotted

Gynostemium - An alternate name for the column

HCC- Highly Commended Certificate. Lowest of the three flower-quality awards given by the American Orchid Society, for plants scoring 74.5-79.4 points.

Habitat- The natural origin of a plant.

Haploid – With a single set of unpaired chromosomes in the nucleus.

Hapuu- Hawaiian word for tree fern fiber. It has a fibrous trunk used as a potting medium for orchids. It can be used in shredded form in containers, or as logs, slabs, or blocks.

Heteranthous - a growth that produces neither pseudobulb or leaf yet from which a new inflorescence arises

High light- For orchids, the brightest category of light-level needs, generally above 3,000 foot candles , and typically found only in sunrooms, in greenhouses, outdoors, in southern windows, or under high-intensity-discharge artificial lights.

Hirstute – covered with long hairs.

Hispid - with bristles or strong hairs

Host – A plant from which a parasite plant derives its nourishment. A tree on which an epiphytic plant grows.

Humus- Decomposing organic matter on or in the soil.

Hybrid- The resulting progeny from the union of two different species (known as a primary hybrid), or of a species and a hybrid, or of two hybrids (known as a complex hybrid).

Hybridization – Causing the production of hybrids by crossing different species of varieties.

Hydroponics - A soilless method of growing plants, using nutrient solutions and an inorganic supporting medium.

AWAY SHOW BULLETIN

Now we enter the heart of the show season with seven shows in the next two months finishing with the Spring MAOC in Illinois. Naila Caruso, our Away Show Chair, is still in need of assistance in getting COOS to some of the shows and, heck, she can always use a little help setting up or tearing down on the shows that she will be able to do herself. Below is a listing of shows that she contacted regarding our participation. As noted last month, she can't do them all because of her work commitments and other personal issues. The shows highlighted in red are the shows that Naila will be able to make. The shows in black are those that are looking for volunteers. Someone to set up a show, to tear down a show, to do an away show entirely, or all of the above. Akron, Ann Arbor and Pittsburgh are among the shows that will require volunteers. Remember going to other shows as a society plays a significant role in getting other societies to return the compliment by attending and enhancing our show(s). As we build toward MAOC 2009 here in Columbus, this is a consideration that we should hold in high regard. So, step to the head of the line folks and let Naila know when and where you can help.

March 3-4	Greater Akron Orchid Society Show, Donzells Flower and Garden Center, Akron, Oh.
March 10-11	West Shore Orchid Society Show, Strongsville Recreation Center, Strongsville, OH.
March 17-18	Ann Arbor Orchid Society Show, Matthaei Botanical Gardens, Ann Arbor, MI
March 24-25	Orchid Society of Western Pennsylvania Show, Phipps Garden Center, Pittsburgh, PA.
March 24-25	Greater Cincinnati Orchid Society Show, Krohn Conservatory, Cincinnati, OH.
April 14-15	Central Indiana Orchid Society Show. 8301 Fall Creek Rd., Indianapolis, In. 46256
April 28-29	Illinois Orchid Society Show/MAOC, Chicago Botanic Garden, 1000 Lake Cook Rd. Glencoe, IL.

2006/2007 COOS Officers - Terms of Office are from January 1, 2006 to December 31, 2007

President:	Tom Franczak		614-868-5636
1 st Vice President:	Tennis Maynard	Program Chair	614-252-5710
2 nd Vice President:	Tom Bell-Games	Home Show Chair	614-487-1623
3 rd Vice President:	Naila Caruso	Away Show Chair	614-868-5861
Secretary:	Nancy Heath	Recorder	614-294-6722
Assistant Secretary:	Bill Cavanaugh	Newsletter Editor	614-878-1745
Treasurer:	Dawn Mettler	Collect/Disburse Monies	740-380-3023
Assistant Treasurer:	Jon Young	Membership Chair	614-272-5256

COOS Trustees – Terms of Office Expire December 31st of the Year Shown.

Jim Harper	2009	614-965-1921
Screll Jones	2009	614-864-7924
Ken Mettler	2007	740-380-3023
Nancy Wagener	2007	614-276-8890
Tom Lochner	Immediate Past President	614-487-8197



Cattleya aurantiaca no, no it's *Guarianthe aurantiaca var aurea*
 No, no, it's *Epicladium*...that's it...that's the ticket...*Epicladium aurantiaca*...or is it...

Welcome New Members

Welcome to Christopher and Nancy Krumm and to Ron and Barbara Robins. These are our most recent additions to the Central Ohio chapter of the society of orchid addicts.

Dates for Orchid Judging at the Cincinnati Center: Civic Garden Center of Greater Cincinnati, 2715 Reading Road, Cincinnati. Registration of Plants at 12:00, Judging starts at 1:00. March 11, April 8, May 13, June 10.



Cattleya warscewiczii coerulea



Lycaste spectabilis

It's Showtime

OK, we didn't make a show in January but February was good for two shows. Naila took us to the Miami Valley (Dayton) and Lansing shows. We managed a third place for the exhibit at Dayton. The individual results are below.

1 st	Dendrobium phalaenopsis unknown hybrid	Ruth and Bill Cavanaugh
1 st	Phrag. Don Wimber	Tennis Maynard
1 st	Maxillaria triloris	Screll Jones
2 nd	Oncidium – unknown hybrid	Cliff Hynum
2 nd	Ansella africana	Tennis Maynard
3 rd	Phal Baldan's Kaleidoscope x Taisuco Okaystripe	Tom Franczak
3 rd	Phrag. Longueville	Tennis Maynard
3 rd	Helpilia – San Guinolenta x T. fragrans	Tennis Maynard

Lansing Michigan

3 rd	Paph. Macabre	Bill & Ruth Cavanaugh
3 rd	Phal. Empress 'Maryland x I-Hsin 'Seashell'	Susan Allison
3 rd	Coelogne mossae 'Portland'	Naila Caruso

Naila said the competition was formidable at both shows, with Lansing drawing well from Detroit and Chicago, so congratulations to all who ribboned and many thanks to all who sent plants.

Show volunteers needed!!!!!!

The Maytag repairman is not the loneliest person in the world...a volunteer coordinator with no volunteers to coordinate is! Yep, that would be me. As of March 1st I have had one member (thanks Cliff!) volunteer to work for our spring show. My husband doesn't count since he has no choice. Just as February has flown by, so will March. Please don't wait to sign-up. We need set-up help on Friday, clerks for judging on Saturday, hosts for our COOS table on Saturday and Sunday, and hosts for the hospitality room all three days. We also need food for the hospitality room for the duration too. You can sign-up using our web site. The volunteer sign-up form is listed under "show preparations". You can always contact me directly by my telephone number listed in the member directory. See you at the March meeting!

Nancy Wagener

Notes from the February Meeting.

The show table was another excellent effort by all of the hardy folk who braved the cold with their blooms. Very nice effort by all, especially considering the weather, and much appreciated too by our intrepid away show chair who absconded with a goodly number of plants for the Dayton and Lansing shows. Really good job folks. Keep up the good work and coax those blooms for the March table and of course the COOS Spring Show on March 31 and April 1. As ever, we encourage you to bring your blooming plants to the show table and share your skills and the beauty of your plants with your fellow members. The judging was done by Tom Bell-Games, Screll Jones and Tennis Maynard. In some cases the judges awarded multiple ribbons or divided classes. We do seem to have lost the paper for the paph that won second place so if you are the owner of that plant, please contact your newsletter editor or Wei-Yi Chen, your contest point tabulator extraordinaire so he can make sure you get credit.

Best of Show

Thom Weiland *Lycaste Shoal Haven 'Lipstick' x Always*

Cattleya Alliance

Edna Markley	<i>Cattleya unknown</i>	1 st
Tennis Maynard	<i>BLC Painter's Brush 'Orchidcenter' x LC. Mary Ellen Carter</i>	2 nd

Cymbidium

Oncidium Alliance

Clifton Hynum	<i>Oncidium unknow</i>	1 st
Bill & Ruth Cavanaugh	<i>Oncidium Gower Ramsey</i>	2 nd

Paphiopedilum

Wauneta Kerr	<i>Paph. Incantation x Raisin Pie</i>	1 st
????	????	2 nd
Bill & Ruth Cavanaugh	<i>Paph. Supersuk 'Eureka' AM/AOS x (Raisin Pie x sib)</i>	3 rd
Bill & Ruth Cavanaugh	<i>Paph. Vintner's Treasure 'Merriot' HCC/AOS x Penn Valley</i>	3 rd

Phragmipedium

Tennis Maynard	<i>Phrag. Don Wimber</i>	1 st
Tom Franczak	<i>Phrag. brasiliensis</i>	2 nd
Tennis Maynard	<i>Phrag. Longueville (longifolium x Hanne Popow)</i>	3 rd

Dendrobium

Bill & Ruth Cavanaugh	<i>Dendrobium phalaenopsis unknown</i>	1 st
-----------------------	--	-----------------

Vandaceous (including Phalaenopsis)

Lawanda Martin	<i>Phalaenopsis unknown</i>	1 st
Susan Allison	<i>Phal Empress 'Maryland' AM/AOS x I-Hsin 'Seashell' AM/AOS</i>	2 nd
Bill & Ruth Cavanaugh	<i>Phal. Schilleriana</i>	3 rd
Tom Franczak	<i>Phal. Baldan's Kaleidoscope x Dtps. Taisuco Okaystripe</i>	1 st
Bill & Ruth Cavanaugh	<i>Phal. Brother Showpiece</i>	2 nd
Bill & Ruth Cavanaugh	<i>Phal. Strawberry Swirl x Dtps. Taisuco Candy Stripe</i>	3 rd

Miniatures

Other

Thom Weiland	<i>Lycaste Shoal Haven 'Lipstick' x Always</i>	1 st
Don Weber	<i>Tricholottis bataanensis</i>	2 nd
Screll Jones	<i>Max. triloris</i>	2 nd
Tom Bell-Games	<i>Restrepia guttulata</i>	3 rd

ELOISE HARPER

As you know, last year marked the unfortunate passing of long-time orchid enthusiast, Eloise Harper. Eloise was quite the character and had the wonderful ability to speak the language of orchids to both new grower and expert alike. Eloise, with her husband Jim, was with the Central Ohio Orchid Society from the start. As such, her personality touched several generations of orchid growers through the years. In honor of Eloise's memory, the Central Ohio Orchid Society has made a donation of \$250 to the American Orchid Society. This donation is earmarked toward orchid conservation.

Tom Bell-Games

Annual Growers Contest

As most of you are surely aware by now, we have initiated our first and hereafter annual growers contest. Points are awarded for plants that ribbon and/or are shown at the monthly show table and also for plants that are awarded/ribbioned/shown at the various away orchid shows that COOS attends. Wei-Yi Chen, our master statistician and overall point guru, has compiled the initial results. These totals include the January and February show tables and the Dayton and Lansing away shows. We are off to a good start and it should be an interesting year.

Grower	Points	Grower	Points
Bill & Ruth Cavanaugh	100	Wauneta Kerr	12
Tennis Maynard	83	Lawanda Martin	11
Russ Vernon & Anita Martin	45	Edna Markley	10
Thom Weiland	42	Harold Blazier *	10
Screll Jones	32	Don Weber	10
Naila Caruso	30	Jim Fagan	8
Tom Franczak	24	Dianna Wears	5
Cliff Hynum	23	Steve Pendleton	3
Tom Bell-Games	20	Wei-Yi Chen	1
Susan Allison	17	Dennis Eifel	1
Tom & Pat Stinson	15	Edwina Carreon	1

As the gathering of tags to identify plants shown and/or awarded has been a somewhat inexact science to date, we may have missed someone or someones. If you showed plants and you feel you were not credited, please contact Wei so that he can update the tally.

2007 COOS Calendar

March 15	Meeting – Clark Riley – Taxonomy
March 31, April 1	Central Ohio Orchid Society Annual Show
April 19	Meeting – Ray Barkalow – Semi-hydroponic orchid growing (tentative)
May 17	Meeting – Manuel Aybar – Orchids of the Dominican Republic
June 21	Meeting (speaker to be determined)
July 15	Picnic, tentatively set for Franklin Park Conservatory grounds
September 20	Meeting (speaker to be determined)
October 18	Meeting (speaker to be determined)
November 3-4	Mini-show
November 15	Potluck Dinner

Board Meetings. Board meetings will generally be held the second Tuesday of odd numbered months with the exception of September:

January 9	July 10
March 13	September 18
May 8	November 13

Annual AOS Show Update

Our annual show and plant sale is fast approaching. The show will once again be held at the Franklin Park Conservatory. The schedule is as follows:

Thursday, March 29	6 p.m. – 8 p.m.	Preliminary Set-up (tables, chairs, back drops for exhibits)
Friday, March 30	10 a.m. – 10 p.m.	Show set-up
Saturday, March 31	8 a.m. – 10 a.m.	Ribbon judging
	10 a.m. – 12 p.m.	AOS judging
	10 a.m. – 5 p.m.	Show open to the public
	12 p.m. – 1 p.m.	Judges' Luncheon
Sunday, April 1	10 a.m. – 5 p.m.	Show open to the public
	5 p.m. – 6 p.m.	Show tear-down

As of March 1st, we have the following volunteers signed up:

Set-up Thursday evening – This is very easy and just involves setting up tables, chairs, and backdrops for the exhibits. Lots of fun and it goes very quickly.

Richard and Nancy Wagener
Dave Sayer
(we could use more people)

Host/Hostess – This involves walking around and helping out where ever needed; giving vendors a break if they need it; answering questions; and keeping an eye on the exhibits to be sure no one walks off with plants or disturbs the displays. Ideally, we should have two people around at all times.

Saturday 10 - noon Rosina Bell-Games
Saturday noon – 2 (open)

Saturday 2 -5 pm (open)
Sunday 10 – noon (open)
Sunday noon – 2 (Sue Dervin)
Sunday 2 – 5 (Sue Dervin)

Hospitality – We provide food and beverages for the hard-working judges, clerks, and vendors. Everyone in the society should try to bring in covered dishes. We will use this to feed the judges for the Judges' Luncheon on Saturday. In addition to bringing in food, both days, we also will need people to help tend the hospitality room.

Nancy Wagener
Eileen Ansley
(we could use more people)

Set-up Friday day or evening – This is where we can use lots of people. We will be helping exhibitors (societies and vendors) bring in their plants; help direct them to their display and sales areas; and provide general assistance to help get the show set-up.

John Geslak Tai Maddox
Rosina Bell-Games Dave Sayer
Richard Wagener (we could use more people)

We're not done yet....

Plant Registration – We will once again be using electronic registration of plants. This is a vast improvement over what used to be a painstakingly long process. This now goes extremely quickly and we generate uniform tags for inclusion in the displays. The program also prints out the entire show with all plants entered, so each of the judges and clerks can have a complete list – no more piles of folders (for those who remember them!) Plant registration occurs Friday afternoon and early evening. A week or so prior to the show, we will offer a brief review of how the plant registration process works. Contact Tom Bell-Games at the March meeting if you are interested in participating.

Clerking – This is a great opportunity to learn more about how orchids are judged. Each group of judges will be teamed with a group of clerks to assist in ribbon judging. Ideally, we should have 3 or 4 clerks per team. There will be a head clerk (typically someone who is more experienced and has clerked before), a ribbon clerk (to get judges to sign the ribbons and to place the ribbons with the awarded plants) and a spotter (to work ahead of the judging team, spotting the next plants to be judged).

John Geslak Nancy Wagener
Wei-Yi Chen Thom Weiland
Lori Baldwin Tai Maddox
Robin Morrison Lamont Martin
LaWanda Martin (we could use more people)

Hands-on Talks / Repotting Demonstrations – In the past, we have provided hands-on talks and repotting demonstrations that have been well attended. These will be scheduled at noon, 2:00, and 4:00, each day of the show. So far, only Sue Dervin has stepped forward to volunteer. If you would like to help out, please talk to Tom Bell-Games at the March society meeting.

Tear-Down Sunday Evening – We will need to help the exhibitors collect their things and clean-up after the show. The Franklin Park Conservatory very kindly provides the venue for our show – we need to return the space to its original condition at the end of the show.

Dave and Edna Markley Sue Dervin
Richard and Nancy Wagener (we could use more people)

As you can see, there are any number of ways you might help make this a successful event. We will have more sign-up sheets at the March meeting, prior to the show. If you haven't volunteered before, please consider helping out – it's a lot of fun.

VENDORS

As of March 1, we have the following vendors scheduled to attend. Please note, many vendors will happily accept pre-orders and will bring your order to the show.

New Vision Orchids (Russ Vernon / Anita Martin)

Merriman Orchids and Tropicals

Gypsy Glen Orchids (Dennis D'Alessandro) www.gypsyglenorchids.com

Windswept in Time Orchids

Cat Orchids

Hilltop Orchids

www.hilltoporchids.com

Owens Orchids

www.owensorchids.com

David Sayer Orchids

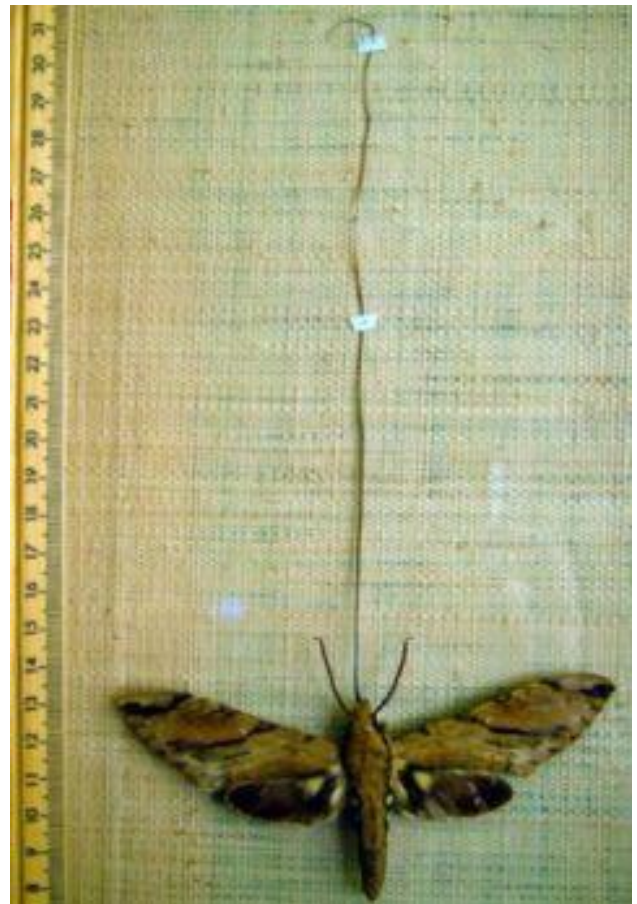
Nancy Heath (orchid pillows and related items)

Cavanaugh Orchids

Hope to see you there! Tom Bell-Games, show chair



Angraecum Sesquipedale



And Friend

REGIONAL SHOWS: The following are upcoming shows within a reasonable distance from the central Ohio area:

March 3-4	Greater Akron Orchid Society Show, Donzells Flower and Garden Center, 937 East Waterloo Rd., Akron, Oh. Contact Cathy Green, 2019 36 th St. NW, Canton, Ohio 44709; (330) 492-4534; orchidlady50@hotmail.com I-71 to I-76 to a bunch of really short turns to Garden Center. Just a smidge over two hours according to google and a nice spring drive to an almost local orchid show.
March 10-11	West Shore Orchid Society Show, Strongsville Recreation Center, 18100 Royalton Rd., Strongsville, OH. Contact: Wayne Roberts, 12390 Root Rd., Columbia Station, OH 44028; (440) 236-5571; rfs@orchidmix.com Another smidge over two hour spring drive according to google, (if you trust them). Just head north where you turned east for the Akron show.
March 17-18	Ann Arbor Orchid Society Show, Matthaei Botanical Gardens, 1800 N. Dixboro Rd., Ann Arbor, MI Contact; Ann Bommarito/Kevin Griffin, PO Box 3006, Ann Arbor, MI 48106-3006; annarboros@yahoo.com . If you're a Buckeye fan, you KNOW the directions. Google says it is a three hour trip almost due north.
March 24-25	Orchid Society of Western Pennsylvania Show, Phipps Garden Center, 1059 Shady Ave., Pittsburgh, PA. Contact; Nancy Kline, 1118 Bay Hill Dr., Gibsonia, PA 25044; (412) 367-1556; nancykline@zoominternet.net . Google says this is a three and one half hour trip to Steeltown but it is all interstate and what says spring more than a little drive in the country.
March 24-25	Greater Cincinnati Orchid Society Show, Krohn Conservatory, 1501 Eden Park Dr. Cincinnati, OH. Contact: Steve Helbling, 2489 Erie Ave. Cincinnati, OH 45208; (513) 321-3702; orchiddevil@aol.com . Ahhh! A twofer. What more can one ask? With a little planning, you can catch two orchid shows in one weekend...or...just one of your choice. A straight shot down I-71. About an hour and fifty minutes per google.
March 31-April 1	Central Ohio Orchid Society Show, Franklin Park Conservatory, 1777 W. Broad St. Columbus, Ohio. Contact: Tom Bell-Games, 1615 Andover Rd. Columbus, Oh 43212. Support your LOCAL orchid society. You can be there in less than 30 minutes with a few notable exceptions.
April 14-15	Central Indiana Orchid Society Show. Contact: Glen Evans, 8301 Fall Creek Rd., Indianapolis, In. 46256 A trip to the Hoosierland. Just under three hours according to mapquest and darn near straight as the crow flies following I-70.
April 28-29	Illinois Orchid Society Show/MAOC, Chicago Botanic Garden, 1000 Lake Cook Rd., Glencoe, IL. Contact: Lois Cinert, 595 Sharon Way, Boilingbrook, IL. 60440; (630) 739-1068; maoc2007chi@earthlink.net . A flat six hour trip one way, but it's MAOC, it's spring and there will be lots and lots of quality orchids. A great weekend trip.

Editor's Corner: Alright, all of you folks, new or not so new who have never worked, excuse me, volunteered at the annual show, take a deep breath and stick your toe in the water. If you have been paying attention, this is the third impassioned or not so much so, plea for volunteers at the annual show. Every year there are members who think to themselves, "I'm new and really don't know that much"; "I'm not very experienced yet and I don't know a thing about judging"; "I could really only help for a couple of hours"; and "Maybe I'll just make some food and that will be my contribution" Well, go ahead and make the food and then call Nancy Wagener or Tom Bell-Games and volunteer for something else as well.

If you read Tom's article, the person who showed up most often on the volunteer list was some guy by the name of "We could use more people." Come on people, don't make your show chair sweat this right to the very end. Give a couple of hours (or more) of your time that weekend to help make the show a success. Besides, you are

right there and you can take in the show as soon as your done... or before you start. It is a known fact that judges don't bite. Ok...They don't bite very hard. Clerk.! What better opportunity are you going to have to observe the judging process and learn how it is done and what you, as a grower, want to achieve. And every year there is at least one person (usually more than one) who has never clerked before. Your only a newbie once. Go for it. Be a host or hostess. You joined an orchid society so you could talk to like minded people about a subject that you love. You will have an abundance of people who come just to talk to someone about orchids. I know I answered three hundred questions last year and I was lashed to a sales table and not even out on the floor. Set up, tear down, man the hospitality room (you get to eat the goodies too), or all of the above. We have over 100 members and we should have more than seventeen volunteers, which is what we have at the moment. I know you are all just waiting to the last moment and that you are all going to jump in there and help, but take it easy on Tom and Nancy. Call them soon, sign up through the website, or see them at the March meeting. They will rest easier, and you will have a lot of fun. Really!!



Pleiones formosana

Bill C.

Hospitality

Our thanks goes to Bill and Ruth Cavanaugh, Screll Jones and Tom and Rosina Bell-Games and anyone else who contributed for all of the delicious snacks that they provided for the February meeting. Also a huge thank you, in advance, to all of those who have signed up to provide snacks and goodies for the upcoming meetings. Below is a list of who has signed up for future dates and the month they signed for. As is ever the case, the spots highlighted in red and reading **Volunteer Needed**, have no volunteers. So all of you volunteers step to the fore and call Naila or sign up at the next meeting to let her know you would like to add your name to the merriment roster.

If you have to cancel try to get a person from the following month to switch or ring Naila to change months.

2007

March	Robin Morrison	April	Chris Bednar
March	Cliff Hynum	April	Dotty Burchfield
March	Norm & Lori Baldwin	April	Sue Dervin
May	Wauneta P. Kerr	June	Volunteer Needed
May	Volunteer Needed	June	Volunteer Needed
May	Volunteer Needed	June	Volunteer Needed

If you have already volunteered for one of these dates, bless you and I will list your name as soon as I have it, just as a reminder.

EVER WONDER... why sheep don't shrink when it rains?

Mid-America Orchid Congress

April 27 – 29, 2007

Illinois Orchid Society Show and Sale

Registration Form

First Registrants Name				Name to Appear on Badge					
Address				City	State	Zip			
Telephone		Fax		e-mail					
Home Orchid Society				MAOC Office or Committee Position					
Judge (Circle Status) AOS ___ Non-AOS _____ Emeritus Senior Accredited Probationary Student Clerk				Do you wish to participate in Ribbon Judging		Yes	No		
				Do You wish to participate in AOS Judging		Yes	No		
Second Registrants Name		Choose	Full registration	Selected events		Name to Appear on Badge			
Address									
Telephone				Fax					
Home Orchid Society				MAOC Office or Committee Position					
Judge (Circle Status) AOS ___ Non-AOS _____ Emeritus Senior Accredited Probationary Student Clerk				Do you wish to participate in Ribbon Judging		Yes	No		
				Do You wish to participate in AOS Judging		Yes	No		
Code	Description			Day	Before 4/1/07	After 4/1/07	Person #1	Person #2	Total
REG	Full Registration includes Show				\$60	\$75			
JL	Judges Luncheon (judges registered before 4/01/07)			Saturday	Included	Included			
JLN	Judges Luncheon (not registered and/or non judge)			Saturday	\$15	\$15			
ASM	Affiliated Societies Breakfast Mid-America Orchid Congress			Sunday	\$18	\$20			
BMC	Banquet –Chicken Oscar			Saturday	\$50	\$55			
BNS	Banquet –Baked New York Strip Loin			Saturday	\$50	\$55			
BHF	Banquet –Herb Crusted Salmon			Saturday	\$50	\$55			
								Total Due	

Please Note:

All food reservations must be made or cancelled by 4/1/07.

Mail this form and your check made payable to the **Illinois Orchid Society** to:

Illinois Orchid Society

Felicia Cochran
1049 David Drive, Apt 1E
Bensenville, Il 60106

THE CENTRAL OHIO ORCHID SOCIETY
c/o BILL CAVANAUGH
4965 OLD TREE AVENUE
COLUMBUS, OH 43232



CENTRAL OHIO ORCHID SOCIETY
NEWSLETTER

WDC